

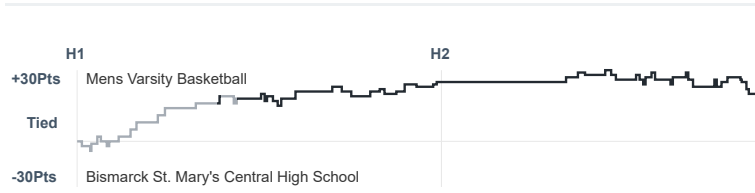
# Box Score Report

MNHS vs SMCHS - Feb 7, 2025 - W 87-66

## Period Stats

Team	1	2	Final
<b>MNHS</b>	<b>50</b>	<b>37</b>	<b>87</b>
SMCHS	25	41	66

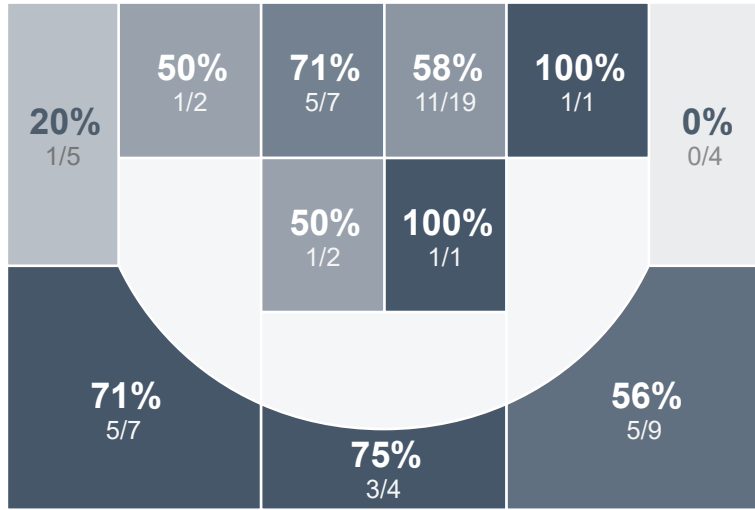
## Run Graph



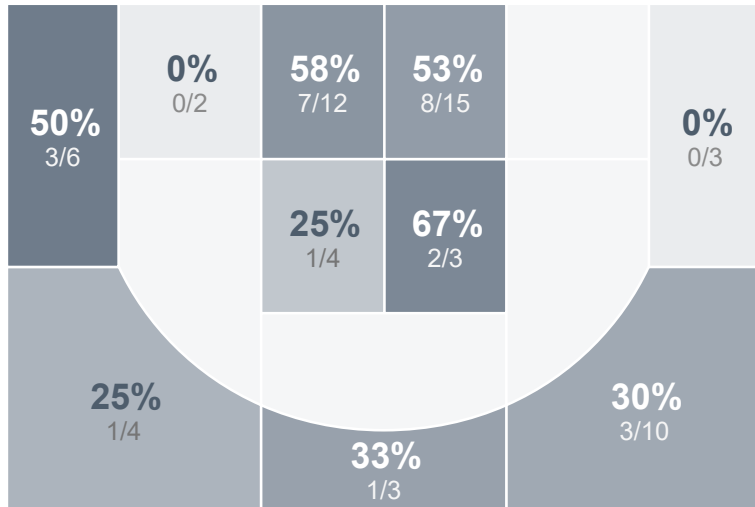
## Team Stats

	MNHS	SMCHS
Field Goal %	<b>55.7%</b>	41.9%
Effective Field Goal %	<b>67.2%</b>	48.4%
2FG Made/Attempted	<b>20/32</b>	18/36
2FG%	<b>62.5%</b>	50.0%
3FG Made/Attempted	<b>14/29</b>	8/26
3FG%	<b>48.3%</b>	30.8%
FT Made/Attempted	<b>5/12</b>	6/16
Free Throw Percentage	<b>41.7%</b>	37.5%
Points Per Possession	<b>1.16</b>	0.88
Transition Points	<b>9</b>	8
Points Off Turnovers	<b>31</b>	15
Second Chance Points	<b>16</b>	9
Points in the Paint	<b>36</b>	36
Offensive Rebounds	<b>11</b>	13
Defensive Rebounds	<b>28</b>	18
Assists	<b>19</b>	13
Deflections	<b>10</b>	12
Steals	<b>11</b>	12
Blocks	<b>1</b>	0
Turnovers	<b>19</b>	18
Personal Fouls	<b>15</b>	16
Charges Taken	<b>0</b>	0

## Mens Varsity Basketball



## Bismarck St. Mary's Central High School



OT1



