

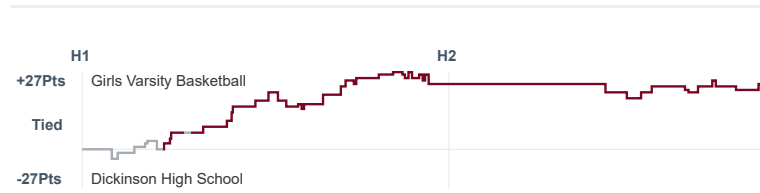
# Box Score Report

BHS vs Dickinson - Jan 21, 2025 - W 70-48

## Period Stats

Team	1	2	Final
BHS	46	24	70
DHS	23	25	48

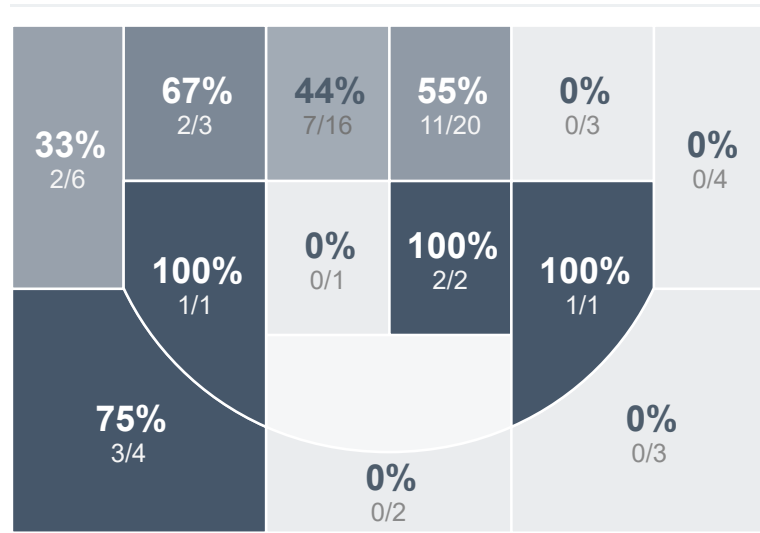
## Run Graph



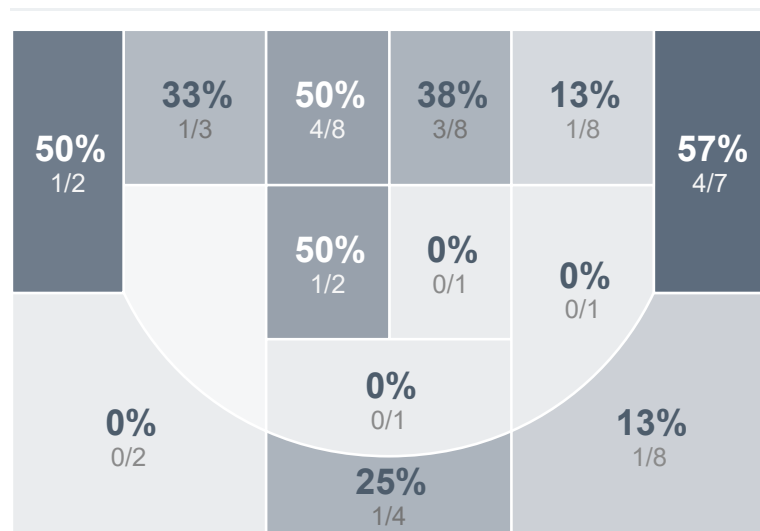
## Team Stats

	BHS	DHS
Field Goal %	43.9%	30.9%
Effective Field Goal %	47.7%	37.3%
2FG Made/Attempted	24/47	10/32
2FG%	51.1%	31.3%
3FG Made/Attempted	5/19	7/23
3FG%	26.3%	30.4%
FT Made/Attempted	7/16	7/14
Free Throw Percentage	43.8%	50.0%
Points Per Possession	0.87	0.60
Transition Points	6	4
Points Off Turnovers	23	5
Second Chance Points	6	13
Points in the Paint	40	16
Offensive Rebounds	11	12
Defensive Rebounds	28	29
Assists	19	10
Deflections	28	13
Steals	18	7
Blocks	7	3
Turnovers	18	31
Personal Fouls	15	14
Charges Taken	0	0

## Girls Varsity Basketball



## Dickinson High School



## Girls Varsity Basketball's Player Stats

Name	Pts	FG	3FG	FT	+/-	MINS	OREB	DREB	AST	DEFL	STL	BLK	TO	FOUL	CHG
#1 Izzy Dahl	4	1/5	0/2	2/4	+ 11	35	3	4	3	1	2	1	2	2	0
#11 Taya Fetting	2	1/6	0/1	0/0	+ 6	27	1	2	0	3	3	0	2	4	0
#12 Opal Sorenson	9	4/10	1/4	0/1	+ 6	20	3	3	2	2	0	0	0	0	0
#15 Kambree Neumiller	8	4/10	0/3	0/0	+ 9	22	0	3	3	3	4	1	2	1	0
#20 Katelyn Luther	9	4/7	0/2	1/5	+ 2	25	0	1	2	3	0	0	1	3	0
#22 Grace Neumann	6	3/5	0/0	0/0	+ 22	11	1	1	3	5	1	0	3	2	0
#24 Reagan Neumiller	5	2/7	1/2	0/0	+ 26	13	0	3	2	5	5	2	3	1	0
#32 Taylor Mayer	18	7/10	2/3	2/4	+ 11	20	0	1	2	2	1	1	4	2	0
#34 Jordyn Rood	9	3/6	1/2	2/2	+ 17	19	1	6	2	4	2	2	1	0	0

## Dickinson High School's Player Stats

Name	Pts	FG	3FG	FT	+/-	MINS	OREB	DREB	AST	DEFL	STL	BLK	TO	FOUL	CHG
#1 Jenna Nelson	6	2/6	2/3	0/2	- 26	36	2	2	1	3	1	0	7	4	0
#3 Aliyah Zastoupil	7	3/8	1/2	0/0	- 19	37	1	2	1	2	1	0	2	3	0
#4 Claire Rodakowski	0	0/0	0/0	0/0	- 24	27	0	4	0	0	0	0	1	1	0
#5 Emily Dutke	0	0/1	0/1	0/0	- 9	15	0	2	0	0	0	0	0	0	0
#15 Ali Stevenson	0	0/1	0/1	0/0	- 6	7	0	1	0	0	0	0	0	0	0
#20 Lauren Selle	17	7/23	1/6	2/6	- 11	32	5	3	5	8	3	2	14	3	0
#22 Abigail Praus	18	5/15	3/10	5/6	- 11	28	0	4	3	0	1	0	3	1	0
#25 Tatum Fisher	0	0/0	0/0	0/0	- 7	6	0	3	0	0	0	0	1	2	0
#34 Rubi Valencia	0	0/1	0/0	0/0	+ 3	5	0	4	0	0	1	1	1	0	0