

Box Score Report

SMCHS vs Williston - Jan 10, 2025 - W 56-55

Period Stats

Team	1	2	Final
SMCHS	26	30	56
WHS	24	31	55

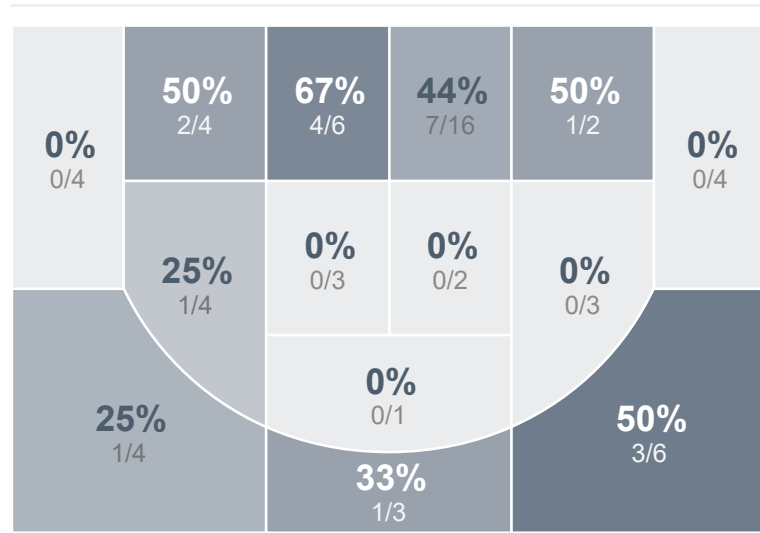
Run Graph



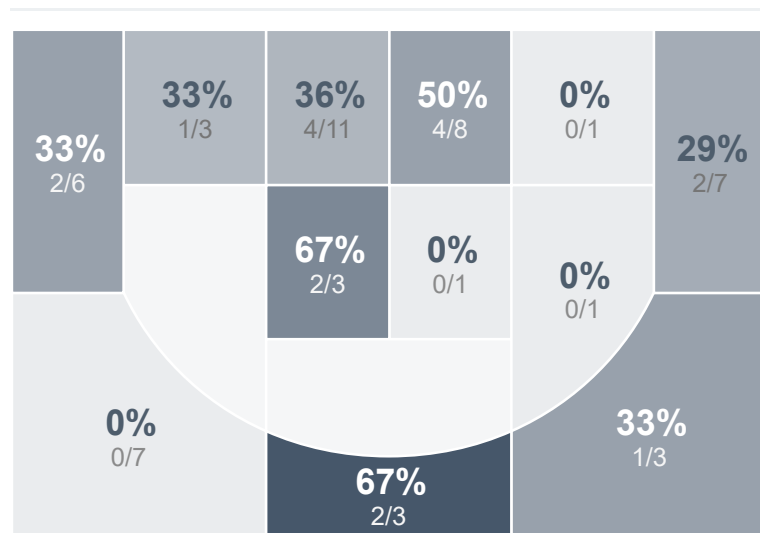
Team Stats

	SMCHS	WHS
Field Goal %	32.3%	33.3%
Effective Field Goal %	36.3%	39.8%
2FG Made/Attempted	15/41	11/28
2FG%	36.6%	39.3%
3FG Made/Attempted	5/21	7/26
3FG%	23.8%	26.9%
FT Made/Attempted	11/22	12/19
Free Throw Percentage	50.0%	63.2%
Points Per Possession	0.67	0.66
Transition Points	11	8
Points Off Turnovers	22	14
Second Chance Points	2	6
Points in the Paint	22	20
Offensive Rebounds	9	15
Defensive Rebounds	20	31
Assists	14	13
Deflections	19	11
Steals	26	14
Blocks	0	0
Turnovers	20	35
Personal Fouls	19	16
Charges Taken	0	0

St. Mary's Saints Girls Basketball



Williston High School



St. Mary's Saints Girls Basketball's Player Stats

Name	Pts	FG	3FG	FT	+/-	MINS	OREB	DREB	AST	DEFL	STL	BLK	TO	FOUL	CHG
#1 Mataya Messer	20	7/18	1/2	5/9	+ 1	39	1	10	3	8	10	0	4	3	0
#5 Mya Jones	2	1/7	0/2	0/0	+ 1	39	0	1	6	0	3	0	4	3	0
#10 Stella Gallik	0	0/2	0/2	0/0	- 8	15	0	0	0	0	2	0	1	2	0
#12 Rachel Schumacher	0	0/0	0/0	0/0	- 14	13	0	0	0	0	0	0	1	0	0
🚩 #13 Unknown Athlete	0	0/1	0/1	0/0	0	3	0	0	0	0	1	0	0	0	0
#15 Natalie Benning	19	6/13	4/9	3/5	+ 16	26	2	2	2	2	2	0	5	4	0
#23 Abigail Schmidt	2	1/7	0/5	0/0	+ 4	27	1	1	2	5	4	0	3	0	0
#25 Journey Oukrop	5	2/8	0/0	1/2	+ 2	23	1	2	1	3	0	0	1	5	0
#32 Savannah Schweitzer	8	3/6	0/0	2/6	+ 3	20	3	4	0	1	4	0	1	2	0

Williston High School's Player Stats

Name	Pts	FG	3FG	FT	+/-	MINS	OREB	DREB	AST	DEFL	STL	BLK	TO	FOUL	CHG
#1 Jovi Zander	0	0/0	0/0	0/0	- 5	18	1	1	0	0	0	0	0	0	0
#3 Micah Fleck	3	1/6	1/5	0/0	- 19	25	1	2	0	1	0	0	2	2	0
#4 Grace Johnson	0	0/4	0/3	0/0	- 3	16	0	1	0	2	2	0	0	0	0
#10 Alex Austreim	7	2/7	0/4	3/4	- 2	35	2	4	4	0	1	0	5	3	0
#11 Allison Wilcox	0	0/1	0/0	0/0	- 13	16	1	1	2	0	0	0	1	4	0
#14 Elizabeth Milne	8	3/8	2/3	0/0	+ 12	21	3	1	1	0	0	0	8	3	0
#20 Averi Austreim	17	6/12	2/5	3/4	+ 3	30	1	5	2	2	3	0	8	1	0
#25 Mekiah Klumker	17	6/11	2/5	3/5	+ 16	23	3	12	1	2	2	0	7	3	0
#30 Rylee Irgens	3	0/5	0/1	3/6	+ 6	22	2	3	3	4	6	0	4	0	0