

Box Score Report

CHS @ Campbell County - Dec 13, 2024 - W 78-60

Period Stats

Team	1	2	3	4	Final
CHS	22	19	20	17	78
CCHS	17	14	16	13	60

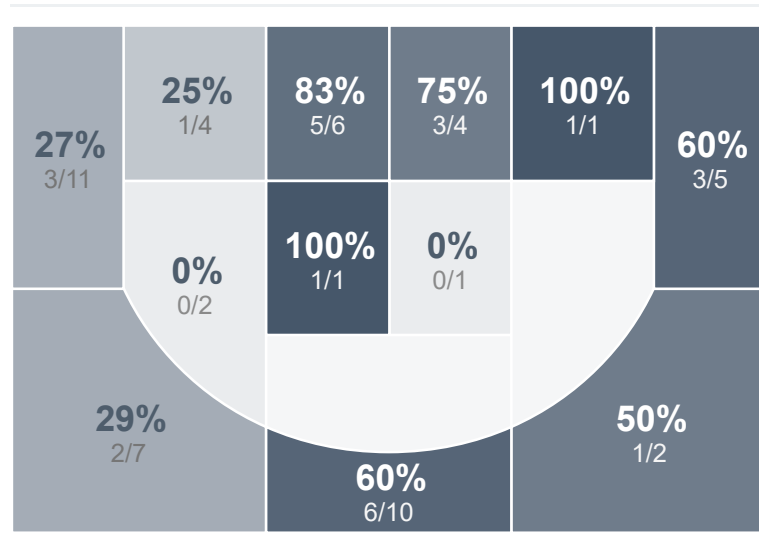
Run Graph



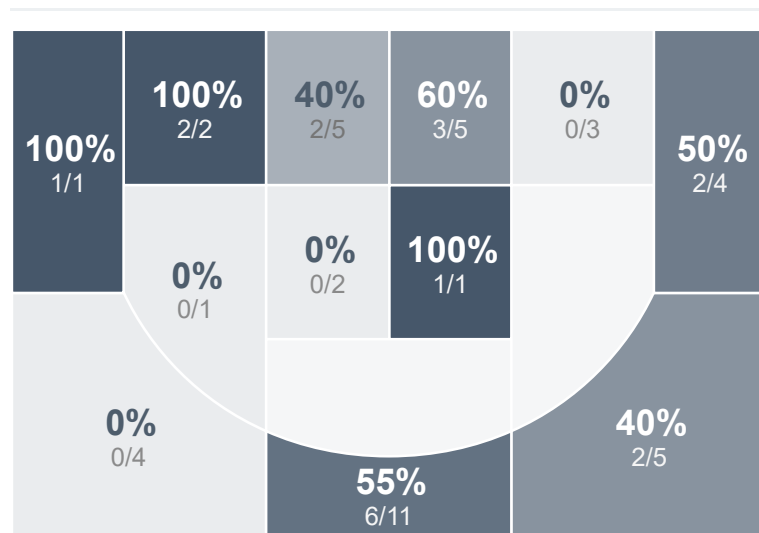
Team Stats

	CHS	CCHS
Field Goal %	48.1%	43.2%
Effective Field Goal %	62.0%	55.7%
2FG Made/Attempted	11/19	8/19
2FG%	57.9%	42.1%
3FG Made/Attempted	15/35	11/25
3FG%	42.9%	44.0%
FT Made/Attempted	11/16	11/17
Free Throw Percentage	68.8%	64.7%
Points Per Possession	1.25	0.94
Transition Points	8	13
Points Off Turnovers	17	18
Second Chance Points	14	6
Points in the Paint	18	12
Offensive Rebounds	13	4
Defensive Rebounds	22	13
Assists	21	14
Deflections	1	6
Steals	9	8
Blocks	0	1
Turnovers	14	16
Personal Fouls	17	19
Charges Taken	0	0

Boys Varsity Basketball



Campbell County High School



Boys Varsity Basketball's Player Stats

Name	Pts	FG	3FG	FT	+/-	MINS	OREB	DREB	AST	DEFL	STL	BLK	TO	FOUL	CHG
#3 Brayden Heinle	0	0/2	0/2	0/0	- 11	8	0	0	1	0	0	0	1	1	0
#4 Braylon Aldinger	18	7/13	4/8	0/0	+ 3	19	2	3	1	0	0	0	1	2	0
#5 Gibson Kinnebrew	15	6/10	1/5	2/2	+ 18	24	1	4	3	0	4	0	0	3	0
#10 Garrett Nissley	18	6/12	6/9	0/0	+ 19	21	1	0	3	0	0	0	2	3	0
#11 Drew Kempel	9	1/2	0/0	7/9	+ 14	26	2	0	10	0	2	0	4	3	0
#14 Noah Herr	0	0/0	0/0	0/0	- 3	4	0	1	0	0	0	0	1	0	0
#20 Camden Kramer	15	5/12	4/10	1/1	+ 30	23	1	3	2	0	2	0	1	0	0
#22 Gil Sheldon	0	0/2	0/1	0/0	- 1	14	0	0	1	0	0	0	3	0	0
#24 Zavion Harildstad	3	1/1	0/0	1/2	+ 4	17	2	2	0	0	1	0	0	3	0
#30 Joseph Kraljic	0	0/0	0/0	0/2	+ 17	20	1	6	0	1	0	0	1	1	0

Campbell County High School's Player Stats

Name	Pts	FG	3FG	FT	+/-	MINS	OREB	DREB	AST	DEFL	STL	BLK	TO	FOUL	CHG
#1 Brode Jarvis	0	0/4	0/1	0/0	- 23	20	0	1	3	0	0	0	2	1	0
#2 Nomar Gonzales	5	2/3	1/2	0/0	- 12	27	0	1	0	0	0	0	1	2	0
#3 Lane Hladky	12	3/12	2/7	4/6	- 18	26	1	2	5	2	1	1	4	3	0
#5 Drew Wasson	0	0/0	0/0	0/0	+ 3	4	0	0	0	0	0	0	0	1	0
#11 Coulter Lang	0	0/1	0/1	0/0	- 7	2	0	0	0	0	0	0	0	0	0
#13 Michael Biggs	2	1/1	0/0	0/0	+ 1	12	0	1	1	1	1	0	1	2	0
#24 Truman Degrange	14	5/12	4/9	0/1	- 16	33	1	3	3	2	3	0	6	4	0
#34 Jack Andela	11	3/5	1/2	4/6	+ 3	19	1	3	0	0	0	0	1	5	0
#45 Mason Drube	16	5/6	3/3	3/4	- 21	31	0	2	2	1	3	0	1	1	0