

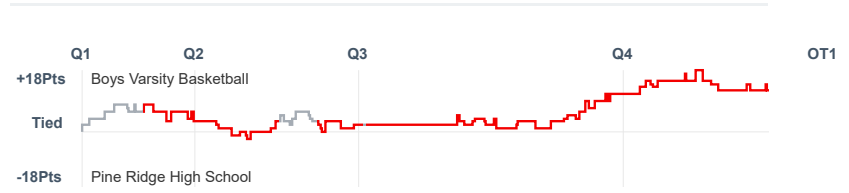
# Box Score Report

CHS @ Pine Ridge - Dec 12, 2024 - W 76-63

## Period Stats

| Team | 1  | 2  | 3  | 4  | Final |
|------|----|----|----|----|-------|
| CHS  | 17 | 16 | 24 | 19 | 76    |
| PRHS | 14 | 17 | 15 | 17 | 63    |

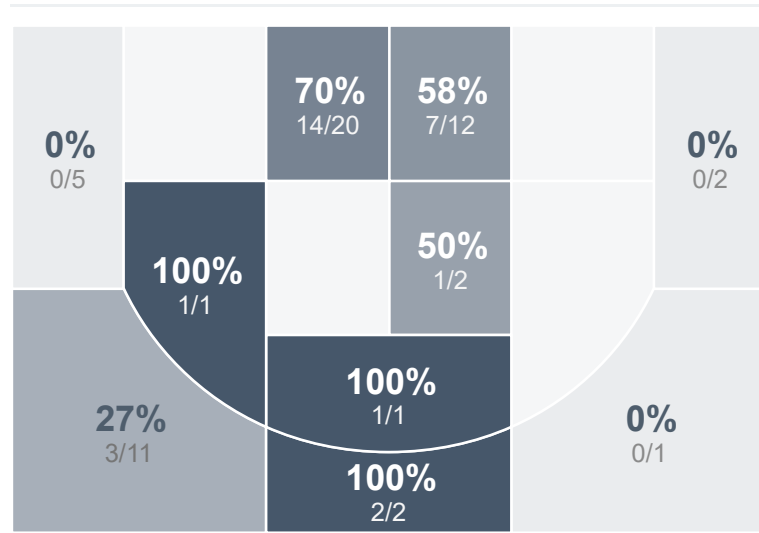
## Run Graph



## Team Stats

|                        | CHS   | PRHS  |
|------------------------|-------|-------|
| Field Goal %           | 50.9% | 42.2% |
| Effective Field Goal % | 55.3% | 47.8% |
| 2FG Made/Attempted     | 24/36 | 14/23 |
| 2FG%                   | 66.7% | 60.9% |
| 3FG Made/Attempted     | 5/21  | 5/22  |
| 3FG%                   | 23.8% | 22.7% |
| FT Made/Attempted      | 13/19 | 20/27 |
| Free Throw Percentage  | 68.4% | 74.1% |
| Points Per Possession  | 1.38  | 1.05  |
| Transition Points      | 2     | 0     |
| Points Off Turnovers   | 9     | 7     |
| Second Chance Points   | 17    | 4     |
| Points in the Paint    | 44    | 28    |
| Offensive Rebounds     | 18    | 8     |
| Defensive Rebounds     | 18    | 9     |
| Assists                | 12    | 8     |
| Deflections            | 6     | 11    |
| Steals                 | 6     | 4     |
| Blocks                 | 6     | 2     |
| Turnovers              | 7     | 10    |
| Personal Fouls         | 20    | 20    |
| Charges Taken          | 0     | 0     |

## Boys Varsity Basketball



## Pine Ridge High School

