

Box Score Report

MNHS vs Mandan - Jan 3, 2025 - L 43-48

Period Stats

Team	1	2	Final
MNHS	23	20	43
MHS	24	24	48

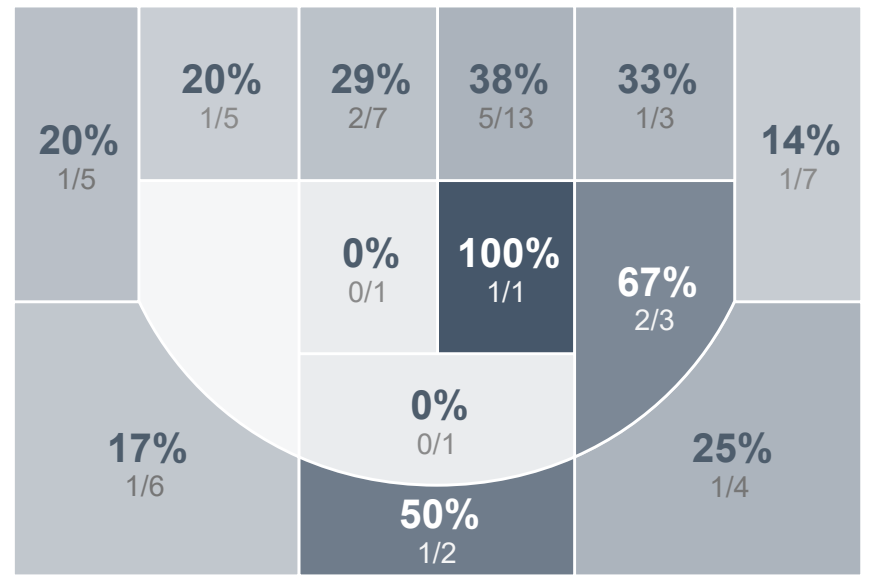
Team Stats

	MNHS	MHS
Field Goal %	29.3%	31.6%
Effective Field Goal %	33.6%	36.8%
2FG Made/Attempted	12/34	12/38
2FG%	35.3%	31.6%
3FG Made/Attempted	5/24	6/19
3FG%	20.8%	31.6%
FT Made/Attempted	4/5	6/9
Free Throw Percentage	80.0%	66.7%
Points Per Possession	0.61	0.69
Transition Points	10	6
Points Off Turnovers	21	21
Second Chance Points	3	11
Points in the Paint	16	22
Offensive Rebounds	12	17
Defensive Rebounds	23	29
Assists	11	14
Deflections	2	8
Steals	12	12
Blocks	1	3
Turnovers	22	25
Personal Fouls	10	7
Charges Taken	0	0

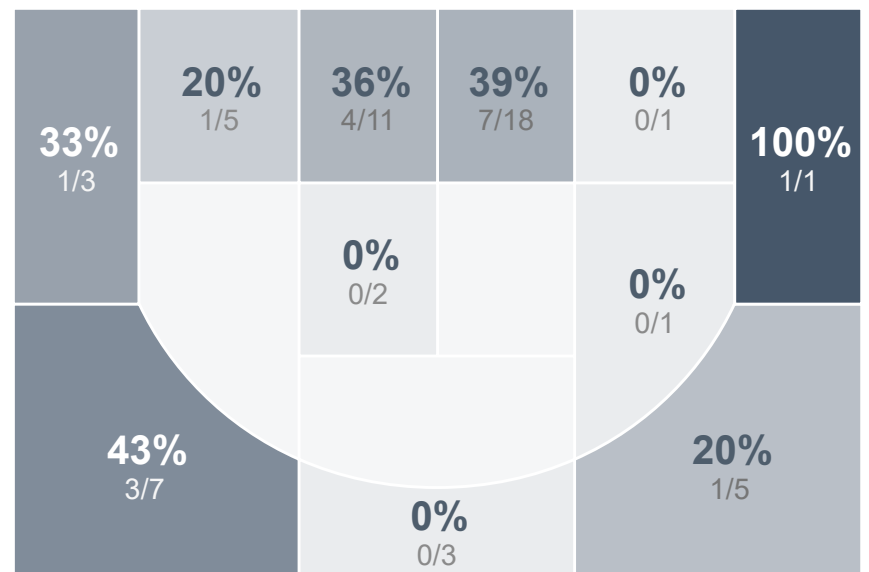
Run Graph



Minot North Girls Basketball



Mandan High School



Minot North Girls Basketball's Player Stats

Name	Pts	FG	3FG	FT	+/-	MINS	OREB	DREB	AST	DEFL	STL	BLK	TO	FOUL	CHG
#1 Gracen Rorem	5	2/6	1/3	0/0	0	20	0	2	1	0	4	0	3	2	0
#2 Addison Clark	2	1/4	0/3	0/0	0	23	1	3	1	0	0	0	4	1	0
#3 Kaydee Nelson	0	0/0	0/0	0/0	+2	7	0	2	1	1	0	0	2	0	0
#5 Kinzy Welstad	13	4/10	2/5	3/3	-7	29	2	0	2	0	1	0	2	0	0
#10 Aven Kelly	2	1/1	0/0	0/0	+1	23	0	3	2	0	2	0	2	3	0
#11 Ashlee Williamson	6	2/11	2/8	0/0	-9	31	1	3	0	0	0	0	3	2	0
#13 Brynn Francis	2	1/2	0/0	0/0	-3	12	1	0	1	0	2	0	2	2	0
#24 Elli Laskowski	13	6/23	0/5	1/2	+1	35	0	7	3	1	3	0	3	0	0
#25 Cadey Shipman	0	0/1	0/0	0/0	-10	5	0	1	0	0	0	1	0	0	0

Mandan High School's Player Stats

Name	Pts	FG	3FG	FT	+/-	MINS	OREB	DREB	AST	DEFL	STL	BLK	TO	FOUL	CHG
#5 Sierra Gustavsson	0	0/1	0/0	0/0	+3	5	2	1	1	2	1	0	1	1	0
#10 Sarah Helderop	5	2/6	1/3	0/0	-1	26	0	3	4	0	0	0	5	1	0
#14 Sapphire Lablanc	16	6/10	4/8	0/0	+2	21	0	2	1	0	1	0	4	1	0
#20 Madysen Schwind	3	1/2	0/0	1/1	-4	15	2	1	1	1	1	0	2	0	0
#22 Anna Lyles	5	2/5	1/1	0/0	+8	21	2	5	1	2	0	0	2	0	0
#23 Kimimila McAllister	0	0/2	0/2	0/0	+1	10	0	1	0	0	0	0	0	2	0
#24 Ziah GreyBull	5	2/12	0/5	1/2	+7	28	0	2	2	3	2	0	5	1	0
#32 Alli Reiner	3	1/4	0/0	1/2	+5	15	1	0	2	0	3	0	1	1	0
#34 Anna Bugbee	1	0/3	0/0	1/2	+1	14	4	4	0	0	3	0	3	0	0
#35 McKenna Johnson	10	4/12	0/0	2/2	+3	30	4	5	2	0	1	3	2	0	0