

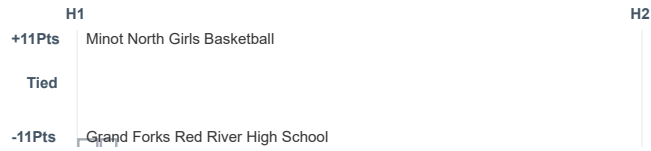
Box Score Report

MNHS @ RRHS - Dec 7, 2024 - L 51-59

Period Stats

Team	1	2	Final
MNHS	25	26	51
RRHS	35	24	59

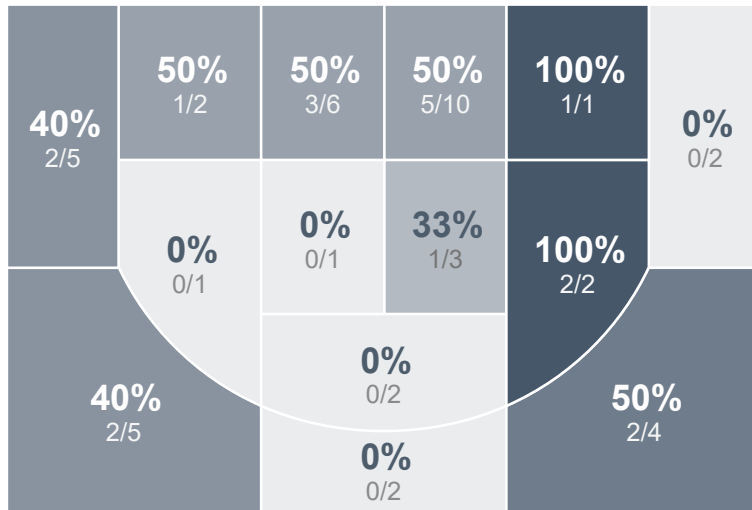
Run Graph



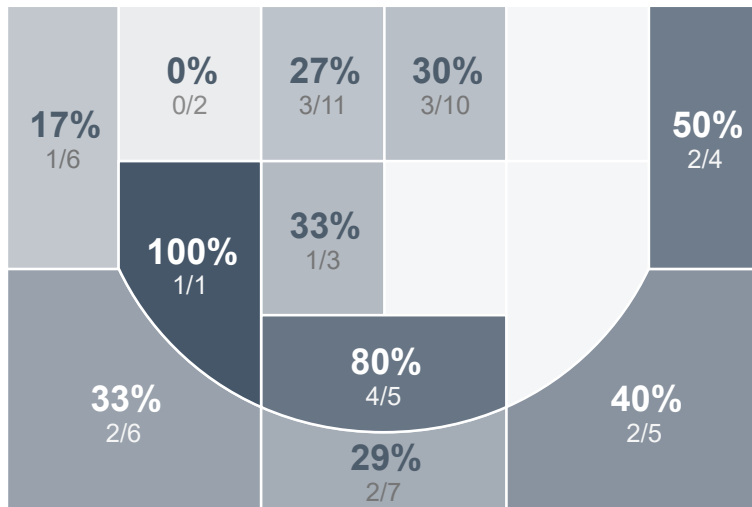
Team Stats

	MNHS	RRHS
Field Goal %	41.3%	35.0%
Effective Field Goal %	47.8%	42.5%
2FG Made/Attempted	13/28	12/32
2FG%	46.4%	37.5%
3FG Made/Attempted	6/18	9/28
3FG%	33.3%	32.1%
FT Made/Attempted	7/18	8/17
Free Throw Percentage	38.9%	47.1%
Points Per Possession	0.68	0.80
Transition Points	10	11
Points Off Turnovers	12	35
Second Chance Points	17	9
Points in the Paint	18	14
Offensive Rebounds	16	16
Defensive Rebounds	28	16
Assists	14	16
Deflections	17	23
Steals	14	25
Blocks	2	3
Turnovers	37	22
Personal Fouls	15	13
Charges Taken	1	0

Minot North Girls Basketball



Grand Forks Red River High School



Minot North Girls Basketball's Player Stats

Name	Pts	FG	3FG	FT	+/-	MINS	OREB	DREB	AST	DEFL	STL	BLK	TO	FOUL	CHG
#1 Gracen Rorem	8	4/7	0/2	0/3	- 4	27	1	3	2	4	2	0	6	3	0
#3 Kaydee Nelson	2	1/1	0/0	0/0	- 12	12	0	1	0	1	0	0	3	0	0
#5 Kinzy Welstad	2	0/3	0/2	2/4	- 2	34	3	2	2	1	5	0	6	1	1
#10 Aven Kelly	4	1/5	0/1	2/4	- 14	29	5	4	1	1	2	1	5	3	0
🚩 #11 Unknown Athlete	12	5/10	2/4	0/2	- 10	29	1	2	1	4	1	0	7	5	0
#13 Brynn Francis	3	1/5	0/2	1/1	- 1	18	0	1	1	4	1	0	1	2	0
🚩 #23 Unknown Athlete	0	0/0	0/0	0/0	+ 7	7	0	1	0	0	0	0	1	0	0
#24 Elli Laskowski	20	7/15	4/7	2/4	- 4	36	5	11	7	2	3	1	8	1	0

Grand Forks Red River High School's Player Stats

Name	Pts	FG	3FG	FT	+/-	MINS	OREB	DREB	AST	DEFL	STL	BLK	TO	FOUL	CHG
#3 Brenna Shock	7	3/8	1/4	0/0	+ 8	23	2	0	4	6	4	1	2	1	0
#4 Emerson Byron	3	1/7	0/4	1/2	+ 5	27	1	1	0	2	3	0	3	2	0
#11 Payton Bergeron	15	4/12	2/4	5/8	+ 7	29	7	5	2	2	9	1	3	3	0
#15 Addison Fargo	3	1/2	1/1	0/0	0	10	0	3	0	2	1	0	2	2	0
#20 Reese Remz	12	5/10	2/4	0/1	+ 10	28	1	0	5	3	6	0	4	0	0
#21 Amy Jacobson	5	2/7	1/6	0/0	+ 3	17	0	0	2	0	0	0	2	0	0
#22 Sheigh Panos	0	0/2	0/0	0/2	- 5	11	0	1	1	4	0	0	2	0	0
#24 Taylor Hodny	2	0/2	0/2	2/4	+ 4	9	1	1	1	1	1	0	1	1	0
#32 Ella Speidel	4	2/6	0/1	0/0	0	24	2	4	1	2	1	1	2	3	0
#44 Londyn Flanagan	8	3/4	2/2	0/0	+ 8	14	1	0	0	1	0	0	1	1	0