

Box Score Report

WHS vs HHS - Dec 9, 2023 - L 44-73

Period Stats

Team	1	2	Final
WHS	20	24	44
HHS	45	28	73

Run Graph

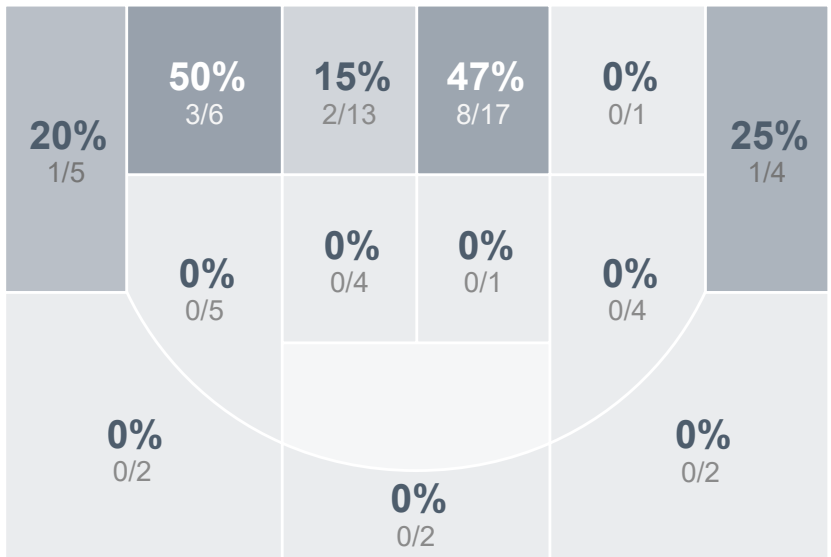


OT1

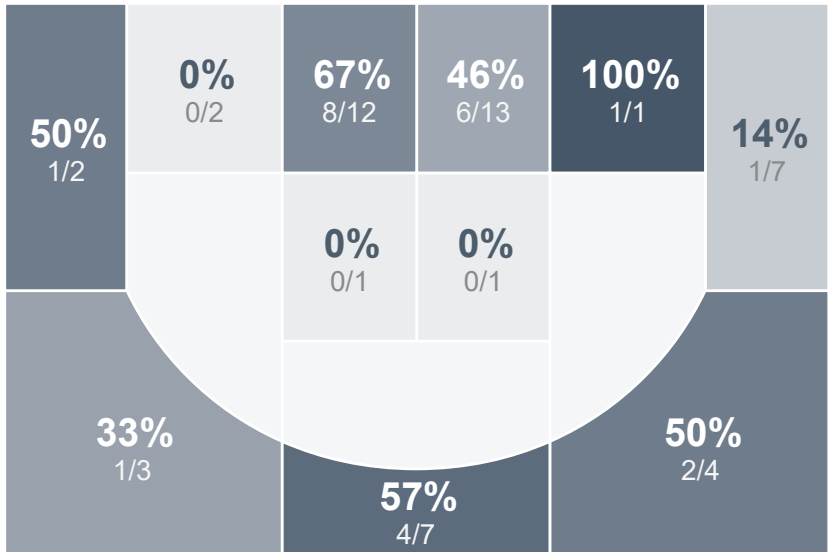
Team Stats

	WHS	HHS
Field Goal %	22.7%	45.3%
Effective Field Goal %	24.2%	53.8%
2FG Made/Attempted	13/51	15/30
2FG%	25.5%	50.0%
3FG Made/Attempted	2/15	9/23
3FG%	13.3%	39.1%
FT Made/Attempted	12/21	16/22
Free Throw Percentage	57.1%	72.7%
Points Per Possession	0.63	1.02
Transition Points	2	8
Points Off Turnovers	8	13
Second Chance Points	13	10
Points in the Paint	20	28
Offensive Rebounds	21	6
Defensive Rebounds	23	34
Assists	7	17
Deflections	7	16
Steals	3	12
Blocks	0	1
Turnovers	15	14
Personal Fouls	16	17
Charges Taken	0	0

Girls' Varsity Basketball




West Fargo Horace High School



Girls' Varsity Basketball's Player Stats

Name	Pts	FG	3FG	FT	+/-	MINS	OREB	DREB	AST	DEFL	STL	BLK	TO	FOUL	CHG
#3 Micah Fleck	6	2/9	1/3	1/2	- 21	21	0	1	0	0	0	0	2	2	0
#11 Allison Wilcox	6	1/7	0/3	4/6	- 33	23	0	3	1	0	0	0	1	2	0
#12 Alex Austreim	3	1/3	0/0	1/3	- 7	21	1	1	0	1	1	0	3	1	0
#14 Elizabeth Milne	4	2/10	0/3	0/0	- 18	28	0	3	1	3	0	0	3	2	0
#15 Kendra Hall	9	2/7	0/0	5/6	- 15	22	2	3	0	1	0	0	0	3	0
#20 Averi Austreim	7	3/17	0/5	1/4	- 20	27	3	2	1	0	1	0	2	3	0
#25 Mekiah Klumker	3	1/4	1/1	0/0	- 8	18	5	2	2	1	0	0	2	1	0
#30 Rylee Irgens	6	3/9	0/0	0/0	- 23	26	9	4	2	1	1	0	2	2	0

West Fargo Horace High School's Player Stats

Name	Pts	FG	3FG	FT	+/-	MINS	OREB	DREB	AST	DEFL	STL	BLK	TO	FOUL	CHG
 Unknown Athlete	3	1/1	1/1	0/0	-	-	0	0	0	0	0	0	0	0	0
#0 Keelie sunde	8	3/9	2/4	0/0	+ 15	31	0	4	3	4	3	0	1	3	0
#1 Lakyn Donnelly	2	1/4	0/2	0/0	+ 22	25	0	4	3	4	1	0	2	4	0
#4 Madison Messer	0	0/0	0/0	0/0	+ 1	4	0	1	1	0	0	0	0	0	0
#5 Megan Hjelmstad	1	0/3	0/3	1/2	+ 26	23	0	3	0	3	0	0	3	1	0
#11 Lilia Donnelly	9	3/5	2/4	1/2	+ 9	23	0	2	2	1	1	0	2	3	0
#13 taylor majkrzak	7	2/4	1/3	2/4	+ 9	15	0	8	1	1	0	0	0	2	0
#21 Ava Larson	3	1/2	1/2	0/0	+ 18	12	1	0	2	0	0	0	1	1	0
#35 Jaiden Haile	17	5/14	0/1	7/8	+ 22	26	3	5	4	1	1	0	2	1	0
#44 Jordan Christofferson	23	8/11	2/3	5/6	+ 23	26	1	7	1	2	6	1	3	2	0