

# Box Score Report

JHS vs SMCHS - Jan 30, 2024 - L 36-69

## Period Stats

Team	1	2	Final
JHS	16	20	36
<b>SMCHS</b>	<b>35</b>	<b>34</b>	<b>69</b>

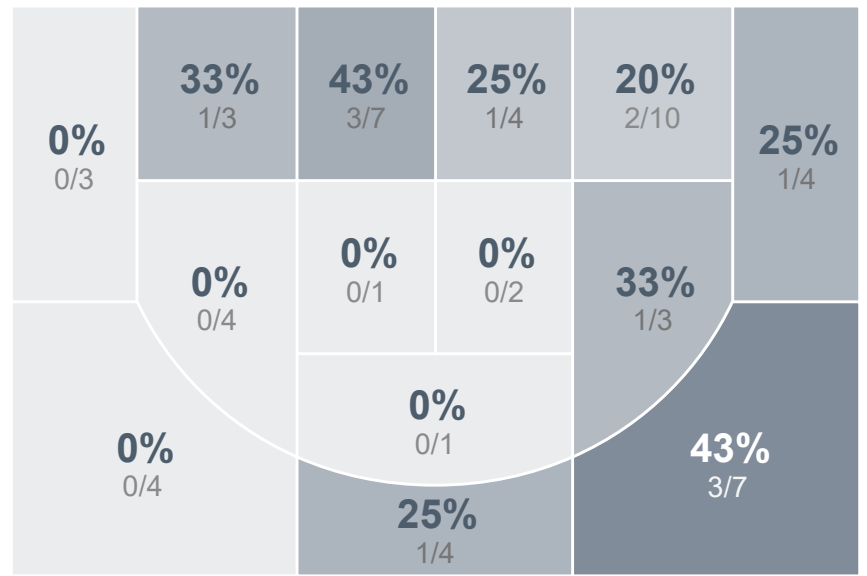
## Run Graph



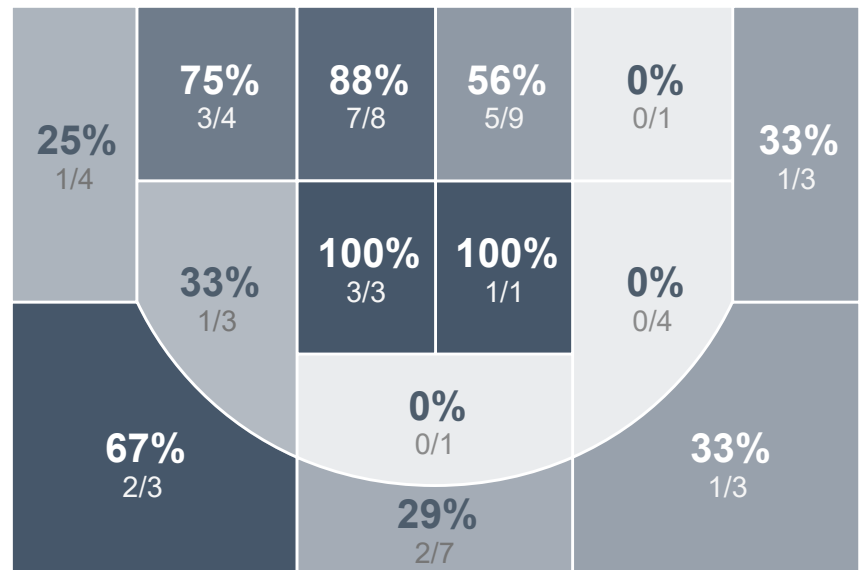
## Team Stats

	JHS	SMCHS
Field Goal %	22.8%	<b>50.0%</b>
Effective Field Goal %	27.2%	<b>56.5%</b>
2FG Made/Attempted	8/35	<b>20/34</b>
2FG%	22.9%	<b>58.8%</b>
3FG Made/Attempted	5/22	<b>7/20</b>
3FG%	22.7%	<b>35.0%</b>
FT Made/Attempted	5/16	<b>8/13</b>
Free Throw Percentage	31.3%	<b>61.5%</b>
Points Per Possession	0.53	<b>1.06</b>
Transition Points	0	<b>14</b>
Points Off Turnovers	4	<b>22</b>
Second Chance Points	<b>10</b>	5
Points in the Paint	8	<b>32</b>
Offensive Rebounds	<b>16</b>	9
Defensive Rebounds	19	<b>27</b>
Assists	8	<b>20</b>
Deflections	9	<b>16</b>
Steals	9	<b>10</b>
Blocks	1	<b>2</b>
Turnovers	<b>19</b>	14
Personal Fouls	12	<b>14</b>
Charges Taken	0	0

## Girls Varsity Basketball





## Bismarck St. Mary's Central High School



## Girls Varsity Basketball's Player Stats

Name	Pts	FG	3FG	FT	+/-	MINS	OREB	DREB	AST	DEFL	STL	BLK	TO	FOUL	CHG
#2 Amelia Newman	3	1/4	0/1	1/2	- 21	26	4	2	4	2	2	0	1	3	0
#3 Mea Ulland	3	1/5	1/4	0/0	- 20	27	1	1	1	0	0	0	2	2	0
#5 Adisyn Yunck	11	5/17	1/6	0/1	- 32	26	2	0	3	2	0	0	5	3	0
#11 Marielle Anderson	3	1/5	1/2	0/2	- 14	22	1	4	0	0	0	1	2	2	0
#12 Haley Attleson	6	2/14	1/6	1/3	- 17	25	3	1	0	1	2	0	4	1	0
#15 Hannah Attleson	0	0/2	0/0	0/0	- 34	25	2	3	0	2	2	0	0	0	0
#21 Leah Trumbauer	10	3/10	1/3	3/6	- 29	31	0	5	0	1	2	0	2	1	0
#22 Claire Marker	0	0/0	0/0	0/2	+ 2	3	1	0	0	1	1	0	0	0	0

## Bismarck St. Mary's Central High School's Player Stats

Name	Pts	FG	3FG	FT	+/-	MINS	OREB	DREB	AST	DEFL	STL	BLK	TO	FOUL	CHG
#1 Mataya Messer	15	6/13	1/3	2/3	+ 34	33	0	7	5	7	1	0	2	1	0
#4 Eva Selensky	0	0/1	0/1	0/0	+ 29	27	0	1	3	2	1	2	1	2	0
 #5 Unknown Athlete	0	0/1	0/0	0/0	- 2	3	0	0	0	0	0	0	0	1	0
#11 Katrice Kern	0	0/0	0/0	0/0	0	2	0	0	0	1	0	0	0	0	0
#13 Lexi Gerving	17	5/12	2/5	5/6	+ 35	31	0	7	9	2	6	0	5	2	0
#14 Gretchen Boll	1	0/0	0/0	1/2	+ 2	10	1	0	0	1	0	0	1	0	0
#15 Natalie Benning	19	8/14	3/8	0/0	+ 34	29	3	5	2	0	0	0	0	2	0
#23 Abigail Schmidt	5	2/4	1/3	0/0	+ 4	14	0	1	0	0	1	0	0	0	0
#25 Journey Oukrop	10	5/7	0/0	0/2	+ 26	27	1	2	1	3	1	0	3	3	0
 #30 Unknown Athlete	0	0/0	0/0	0/0	- 2	3	0	0	0	0	0	0	1	1	0
#32 Savannah Schweitzer	2	1/2	0/0	0/0	+ 5	5	1	1	0	0	0	0	1	2	0