

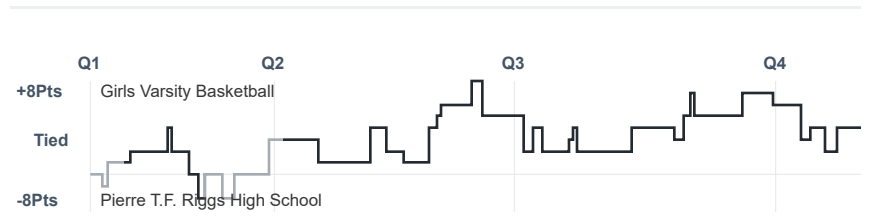
# Box Score Report

BHS @ PHS - Dec 30, 2023 - W 49-45

## Period Stats

Team	1	2	3	4	Final
<b>BHS</b>	<b>12</b>	<b>10</b>	<b>12</b>	<b>15</b>	<b>49</b>
PHS	9	8	11	17	45

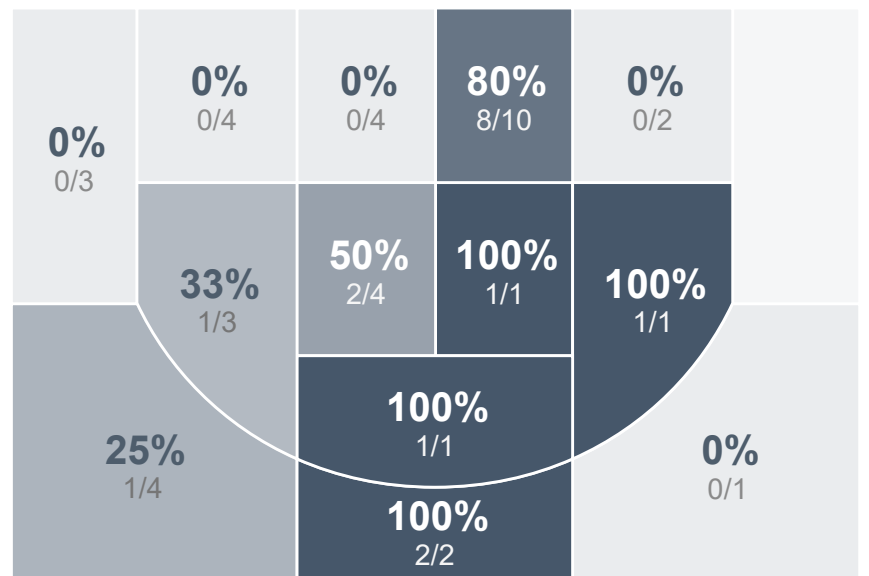
## Run Graph



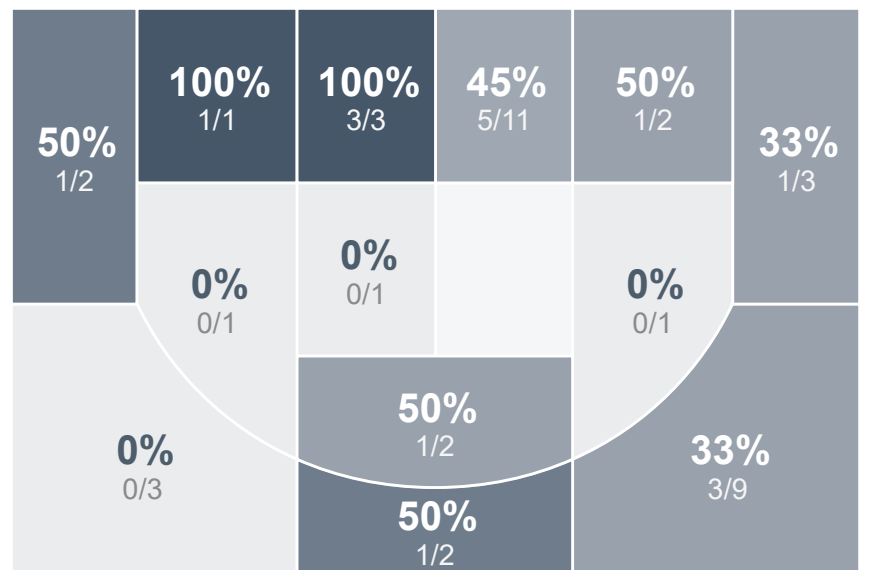
## Team Stats

	BHS	PHS
Field Goal %	<b>42.5%</b>	41.5%
Effective Field Goal %	<b>46.3%</b>	<b>48.8%</b>
2FG Made/Attempted	14/30	<b>11/22</b>
2FG%	46.7%	<b>50.0%</b>
3FG Made/Attempted	3/10	<b>6/19</b>
3FG%	30.0%	<b>31.6%</b>
FT Made/Attempted	<b>12/14</b>	5/19
Free Throw Percentage	<b>85.7%</b>	26.3%
Points Per Possession	<b>0.85</b>	0.75
Transition Points	4	4
Points Off Turnovers	<b>19</b>	11
Second Chance Points	<b>8</b>	7
Points in the Paint	<b>22</b>	16
Offensive Rebounds	7	7
Defensive Rebounds	<b>23</b>	16
Assists	7	<b>12</b>
Deflections	<b>6</b>	5
Steals	7	<b>8</b>
Blocks	0	<b>1</b>
Turnovers	<b>18</b>	17
Personal Fouls	<b>16</b>	14
Charges Taken	0	<b>1</b>

## Girls Varsity Basketball



## Pierre T.F. Riggs High School



## Girls Varsity Basketball's Player Stats

Name	Pts	FG	3FG	FT	+/-	MINS	OREB	DREB	AST	DEFL	STL	BLK	TO	FOUL	CHG
#1 Paige Breuer	14	4/13	0/4	6/6	+ 4	32	1	4	0	0	1	0	0	2	0
#5 Addison Massey	4	2/3	0/0	0/0	- 2	11	0	0	0	0	0	0	2	1	0
#10 Anika Kvien	0	0/0	0/0	0/0	+ 3	1	0	1	0	0	0	0	0	0	0
#15 Cambrie Fischer	0	0/2	0/0	0/0	+ 6	23	1	1	0	4	3	0	5	4	0
#20 Katelyn Luther	3	1/3	1/1	0/0	+ 8	22	1	2	3	1	0	0	4	1	0
#21 Morgan Johnson-Colbert	5	1/1	0/0	3/4	- 6	20	0	6	0	0	0	0	3	2	0
#22 Jersey Berg	6	3/9	0/2	0/0	+ 1	33	0	4	2	1	1	0	2	3	0
#34 Jordyn Rood	5	1/3	1/2	2/2	+ 10	11	0	3	2	0	0	0	0	2	0
#45 Raya Rood	12	5/6	1/1	1/2	- 4	22	3	2	0	0	2	0	2	1	0

## Pierre T.F. Riggs High School's Player Stats

Name	Pts	FG	3FG	FT	+/-	MINS	OREB	DREB	AST	DEFL	STL	BLK	TO	FOUL	CHG
#3 Aleise Christopherson	0	0/3	0/3	0/0	- 4	35	1	7	5	1	2	0	3	1	0
#10 Lennix Dupris	11	4/11	2/8	1/4	- 4	35	1	3	1	2	2	0	4	2	0
#13 Ryann Barry	16	6/13	3/7	1/3	- 4	35	1	1	2	1	3	0	6	4	0
#15 Reese Terwilliger	11	4/9	0/0	3/10	- 4	35	2	5	1	1	1	1	2	4	0
#20 Gracelyn Taylor	5	2/3	1/1	0/0	- 1	14	0	0	1	0	0	0	0	1	0
#23 Grace Richter	2	1/2	0/0	0/2	- 3	22	2	0	2	0	0	0	1	2	1