

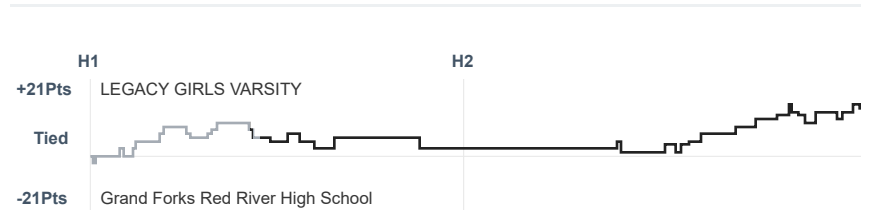
Box Score Report

LHS @ RRHS - Dec 28, 2023 - W 57-36

Period Stats

Team	1	2	Final
LHS	21	36	57
RRHS	19	17	36

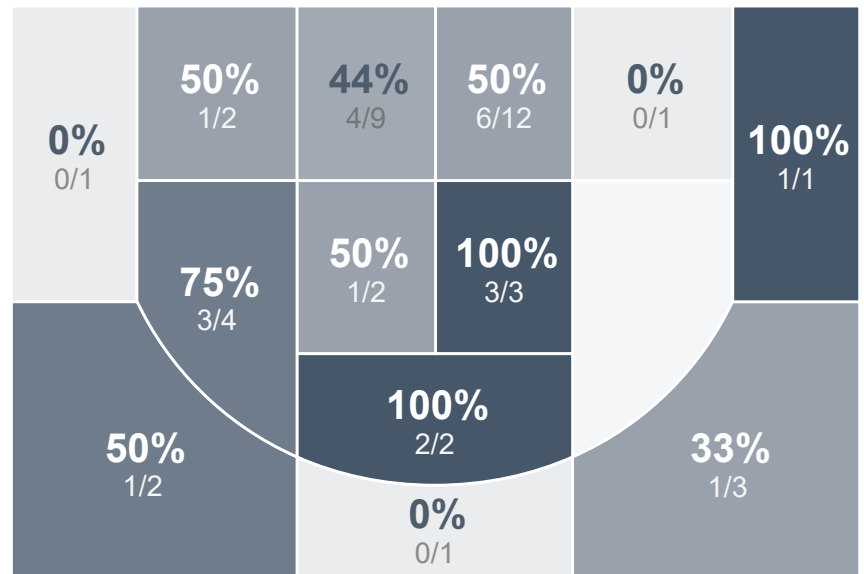
Run Graph



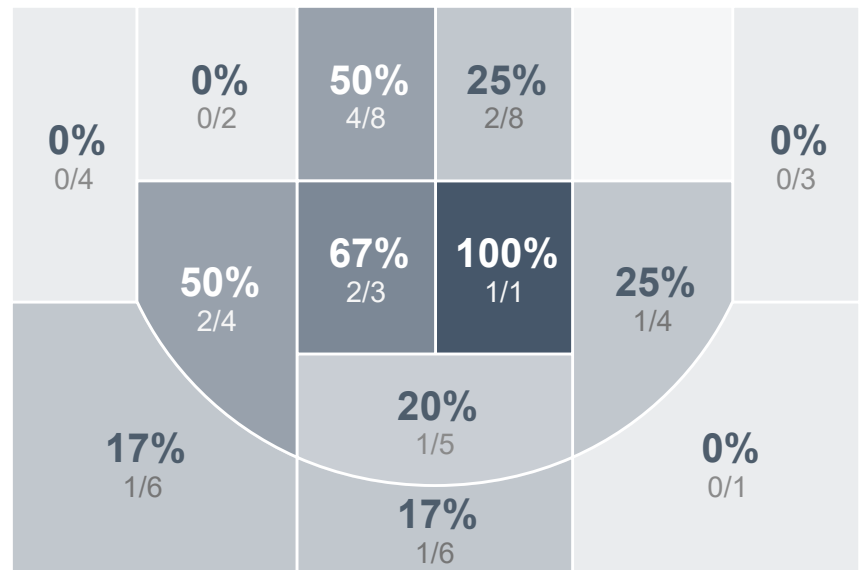
Team Stats

	LHS	RRHS
Field Goal %	53.5%	27.3%
Effective Field Goal %	57.0%	29.1%
2FG Made/Attempted	20/35	13/35
2FG%	57.1%	37.1%
3FG Made/Attempted	3/8	2/20
3FG%	37.5%	10.0%
FT Made/Attempted	8/9	4/8
Free Throw Percentage	88.9%	50.0%
Points Per Possession	0.96	0.60
Transition Points	8	2
Points Off Turnovers	10	10
Second Chance Points	7	6
Points in the Paint	28	18
Offensive Rebounds	3	10
Defensive Rebounds	31	16
Assists	21	7
Deflections	5	11
Steals	4	4
Blocks	2	2
Turnovers	15	11
Personal Fouls	10	12
Charges Taken	0	1

LEGACY GIRLS VARSITY



Grand Forks Red River High School



LEGACY GIRLS VARSITY's Player Stats

Name	Pts	FG	3FG	FT	+/-	MINS	OREB	DREB	AST	DEFL	STL	BLK	TO	FOUL	CHG
#12 Halle Severson	4	2/5	0/0	0/0	+ 14	27	0	4	2	4	0	0	4	1	0
#13 Kali Dauenhauer	21	8/12	1/3	4/4	+ 19	30	1	3	5	0	0	0	4	2	0
#14 Whitney Welk	2	1/3	0/0	0/0	+ 18	24	0	4	5	1	0	0	1	1	0
#15 Aleah McPherson	5	2/4	1/2	0/0	+ 12	27	0	1	4	0	2	0	0	0	0
#23 Mia Berryhill	3	1/4	1/3	0/0	+ 12	29	0	5	2	0	1	0	4	1	0
#30 Jessica Botsford	0	0/1	0/0	0/0	+ 6	13	0	0	1	0	0	0	1	3	0
#32 Abby Burman	3	1/1	0/0	1/1	+ 6	5	1	0	0	0	0	0	0	1	0
#34 Brooklynn Felchle	19	8/13	0/0	3/4	+ 18	33	1	9	2	0	1	2	1	1	0

Grand Forks Red River High School's Player Stats

Name	Pts	FG	3FG	FT	+/-	MINS	OREB	DREB	AST	DEFL	STL	BLK	TO	FOUL	CHG
#3 Brenna Shock	0	0/0	0/0	0/0	- 2	1	0	0	0	0	0	0	1	0	0
#5 Morgan Hartze	2	1/3	0/1	0/0	+ 3	15	0	0	1	0	0	0	0	1	0
#10 Alex Stauss	0	0/3	0/2	0/0	- 19	14	0	0	0	1	0	0	0	1	0
#11 Payton Bergeron	0	0/0	0/0	0/0	- 4	8	1	1	1	0	0	0	0	0	0
#23 Hannah Litzinger	2	1/4	0/2	0/0	- 17	30	0	3	0	2	1	1	2	2	0
#24 Rylie McQuillan	5	2/15	1/6	0/2	- 21	33	1	2	2	2	1	0	0	1	1
#30 Jocelyn Schiller	19	7/18	1/5	4/6	- 18	37	2	5	3	2	1	0	4	3	0
#32 Ella Speidel	8	4/6	0/0	0/0	- 5	26	2	2	0	0	0	0	1	0	0
#33 Ella Weippert	0	0/3	0/3	0/0	- 6	13	0	2	0	1	1	1	2	0	0
#42 Maggie Barker	0	0/3	0/1	0/0	- 16	12	2	0	0	3	0	0	1	3	0