

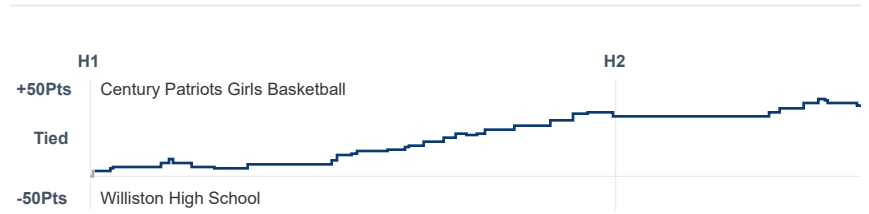
Box Score Report

CHS vs Williston - Dec 15, 2023 - W 78-30

Period Stats

Team	1	2	Final
CHS	39	39	78
WHS	8	22	30

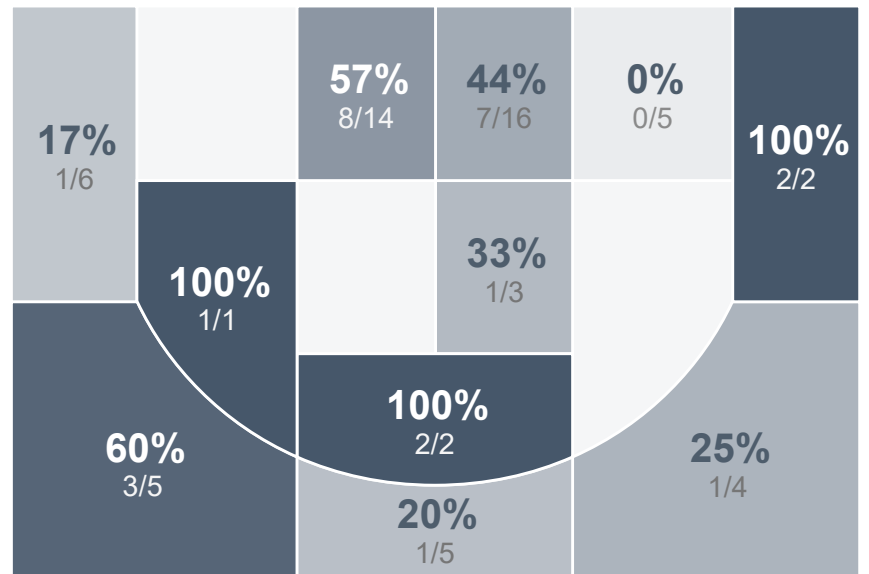
Run Graph



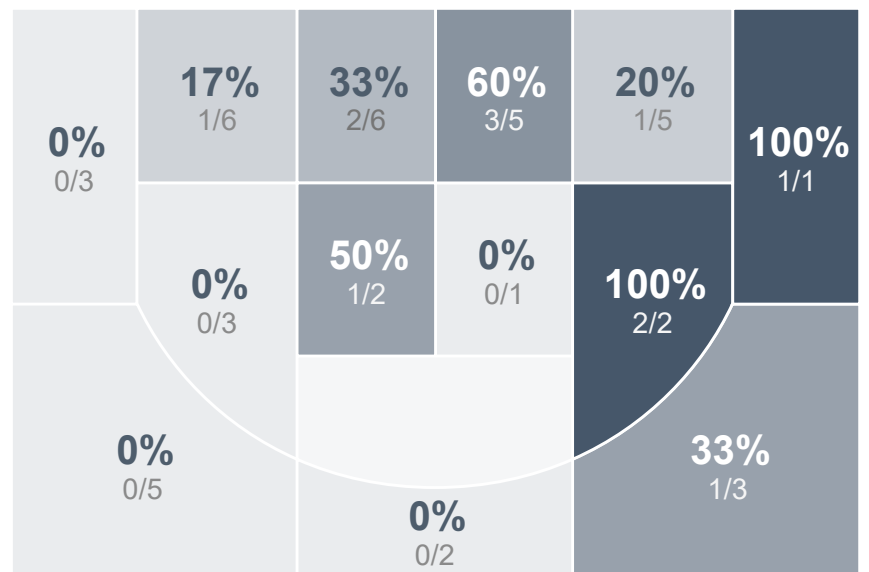
Team Stats

	CHS	WHS
Field Goal %	42.9%	27.3%
Effective Field Goal %	49.2%	29.5%
2FG Made/Attempted	19/41	10/30
2FG%	46.3%	33.3%
3FG Made/Attempted	8/22	2/14
3FG%	36.4%	14.3%
FT Made/Attempted	16/22	4/8
Free Throw Percentage	72.7%	50.0%
Points Per Possession	1.14	0.46
Transition Points	13	0
Points Off Turnovers	31	4
Second Chance Points	10	2
Points in the Paint	32	12
Offensive Rebounds	20	7
Defensive Rebounds	24	18
Assists	13	6
Deflections	13	7
Steals	17	4
Blocks	3	0
Turnovers	15	24
Personal Fouls	13	18
Charges Taken	0	0

Century Patriots Girls Basketball



Williston High School



Century Patriots Girls Basketball's Player Stats

Name	Pts	FG	3FG	FT	+/-	MINS	OREB	DREB	AST	DEFL	STL	BLK	TO	FOUL	CHG
#3 Eden Fridley	9	3/8	3/6	0/0	+ 42	26	0	4	0	2	6	0	0	2	0
#5 Zoie Austin	18	8/13	0/2	2/2	+ 37	20	3	4	2	3	0	0	1	3	0
#11 Abby Fosland	7	3/4	1/2	0/1	+ 45	26	0	1	2	2	3	0	3	3	0
#14 Ashlyn Buchholz	14	6/13	2/3	0/2	+ 42	20	4	3	5	1	3	1	2	1	0
#20 Addie Weigel	5	1/3	0/1	3/4	+ 14	18	0	1	0	1	0	0	1	1	0
#21 Alison Volk	3	1/2	1/2	0/0	+ 1	7	0	1	0	0	0	0	0	0	0
#23 Olivia Klimpel	15	4/10	1/3	6/7	+ 14	20	2	2	1	3	2	0	2	2	0
#30 Emma Davis	4	1/3	0/2	2/2	+ 10	17	3	3	1	1	1	1	1	1	0
#33 Erika Lee	3	0/5	0/0	3/4	+ 36	24	7	4	2	0	1	1	4	0	0
#35 Olivia Thunder Hawk	0	0/2	0/1	0/0	- 1	6	0	0	0	0	1	0	1	0	0

Williston High School's Player Stats

Name	Pts	FG	3FG	FT	+/-	MINS	OREB	DREB	AST	DEFL	STL	BLK	TO	FOUL	CHG
#3 Micah Fleck	8	3/7	1/2	1/2	- 45	20	0	1	0	0	1	0	5	3	0
#4 Grace Johnson	0	0/3	0/3	0/0	- 26	25	0	4	0	0	0	0	0	2	0
#11 Allison Wilcox	9	4/7	0/0	1/3	- 37	28	1	2	2	0	0	0	3	1	0
#12 Alex Austreim	0	0/0	0/0	0/1	- 18	11	0	3	0	0	0	0	2	2	0
#14 Elizabeth Milne	0	0/6	0/3	0/0	- 29	26	1	1	0	2	2	0	4	2	0
#15 Kendra Hall	0	0/2	0/1	0/0	- 37	24	0	2	0	2	0	0	3	3	0
#20 Averi Austreim	4	1/5	0/0	2/2	- 29	23	0	1	1	1	0	0	4	3	0
#21 Emma Shockley	7	3/12	1/4	0/0	- 13	16	0	0	1	1	1	0	2	2	0
#30 Rylee Irgens	2	1/2	0/1	0/0	- 6	10	1	0	2	1	0	0	1	0	0