

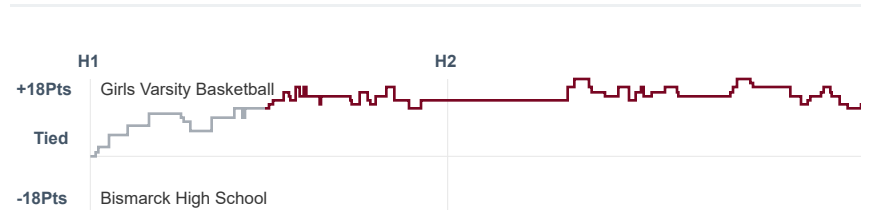
# Box Score Report

MHS vs Bismarck - Dec 15, 2023 - W 61-48

## Period Stats

Team	1	2	Final
<b>MHS</b>	<b>37</b>	24	<b>61</b>
BHS	24	24	48

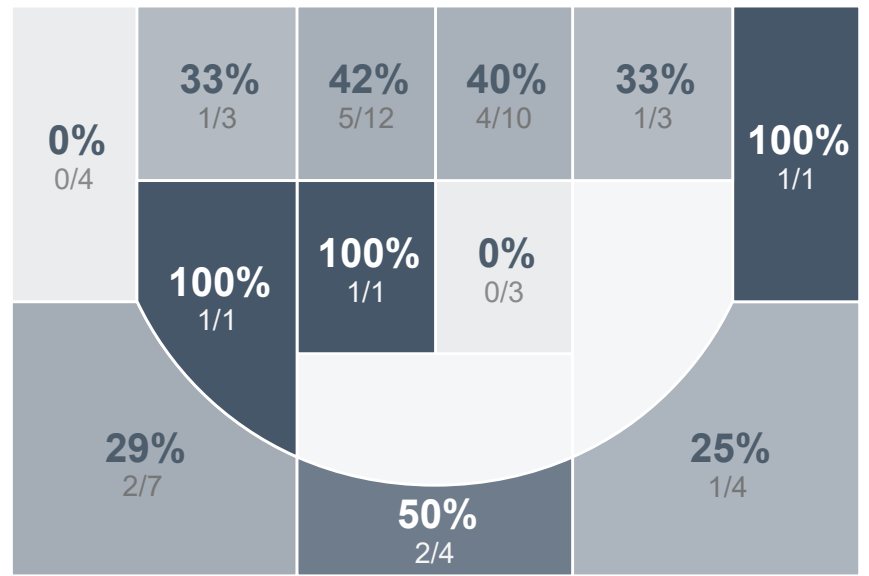
## Run Graph



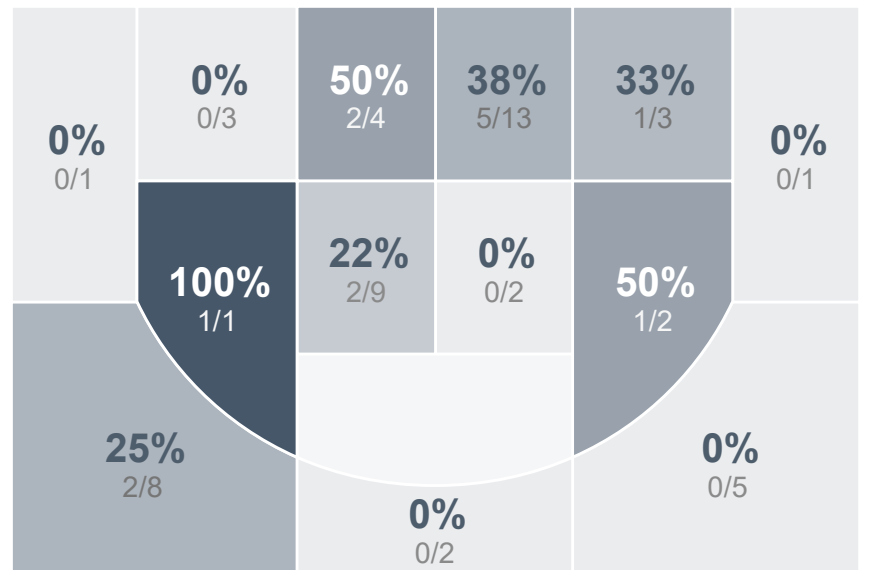
## Team Stats

	MHS	BHS
Field Goal %	<b>35.8%</b>	25.9%
Effective Field Goal %	<b>41.5%</b>	27.8%
2FG Made/Attempted	<b>13/33</b>	12/37
2FG%	<b>39.4%</b>	32.4%
3FG Made/Attempted	<b>6/20</b>	2/17
3FG%	<b>30.0%</b>	11.8%
FT Made/Attempted	17/24	<b>18/23</b>
Free Throw Percentage	70.8%	<b>78.3%</b>
Points Per Possession	<b>0.89</b>	0.72
Transition Points	2	<b>9</b>
Points Off Turnovers	<b>10</b>	9
Second Chance Points	1	<b>9</b>
Points in the Paint	<b>20</b>	18
Offensive Rebounds	8	<b>12</b>
Defensive Rebounds	<b>28</b>	26
Assists	7	7
Deflections	5	<b>8</b>
Steals	<b>6</b>	3
Blocks	<b>3</b>	0
Turnovers	12	<b>14</b>
Personal Fouls	<b>22</b>	21
Charges Taken	0	<b>2</b>

## Girls Varsity Basketball



## Bismarck High School



## Girls Varsity Basketball's Player Stats

Name	Pts	FG	3FG	FT	+/-	MINS	OREB	DREB	AST	DEFL	STL	BLK	TO	FOUL	CHG
#2 Maggie Fricke	19	6/18	2/5	5/8	+ 10	34	1	3	1	2	2	0	3	4	0
#3 Eve Knutson	0	0/2	0/1	0/0	+ 2	24	1	0	1	0	0	0	0	2	0
#4 Kinley Bartsch	3	1/2	1/2	0/0	- 3	17	0	1	1	1	0	0	0	1	0
#10 Everette Deschamp	5	2/3	1/2	0/1	+ 15	16	0	2	0	1	1	0	0	4	0
#11 Sydney Aberle	0	0/2	0/0	0/0	+ 3	8	1	1	0	0	0	0	1	2	0
#21 Presley Bennett	3	1/3	1/3	0/0	+ 9	26	0	4	1	0	0	1	3	2	0
#24 Karew Lamoureux	4	1/4	0/2	2/2	+ 13	27	0	1	1	1	2	0	2	4	0
#30 Leelee Bell	27	8/19	1/5	10/13	+ 16	32	2	12	2	0	1	2	1	3	0

## Bismarck High School's Player Stats

Name	Pts	FG	3FG	FT	+/-	MINS	OREB	DREB	AST	DEFL	STL	BLK	TO	FOUL	CHG
#1 Paige Breuer	15	5/11	1/6	4/4	- 9	30	1	4	2	1	0	0	1	4	0
#5 Addison Massey	0	0/2	0/2	0/2	- 7	22	1	3	2	0	0	0	0	1	0
#15 Cambrie Fischer	3	0/3	0/1	3/4	- 9	15	1	2	0	3	0	0	3	4	2
#20 Katelyn Luther	5	2/4	0/0	1/2	- 8	20	2	1	0	1	1	0	1	1	0
#21 Morgan Johnson-Colbert	4	1/9	0/1	2/2	- 9	28	4	5	0	0	1	0	3	2	0
#22 Jersey Berg	12	3/12	1/4	5/6	- 13	35	0	8	3	0	1	0	3	1	0
#34 Jordyn Rood	6	2/7	0/3	2/2	0	16	1	1	0	3	0	0	0	4	0
#45 Raya Rood	3	1/6	0/0	1/1	- 10	16	1	1	0	0	0	0	3	4	0