

Box Score Report

WCHS @ Bowman County - Dec 5, 2023 - L 39-53

Period Stats

Team	1	2	3	4	Final
WCHS	6	12	11	10	39
BCHS	12	17	13	11	53

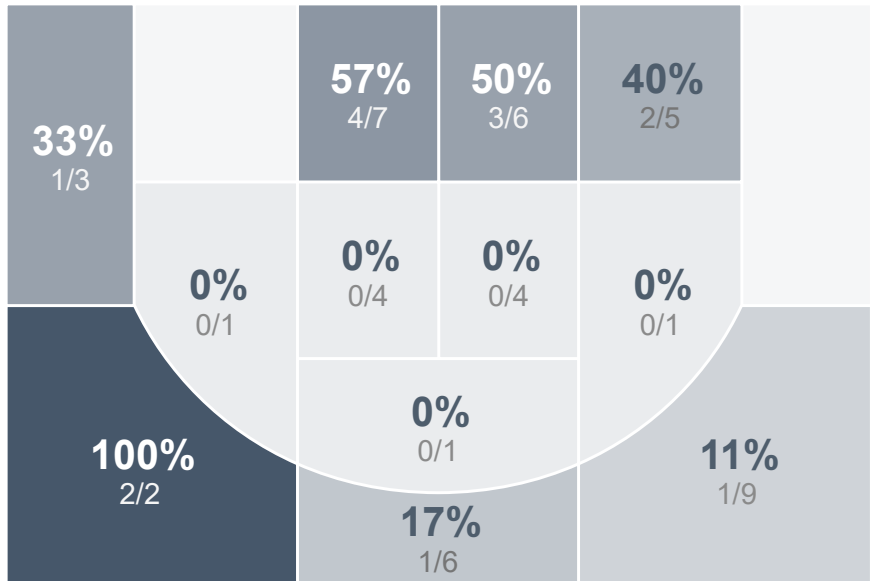
Run Graph



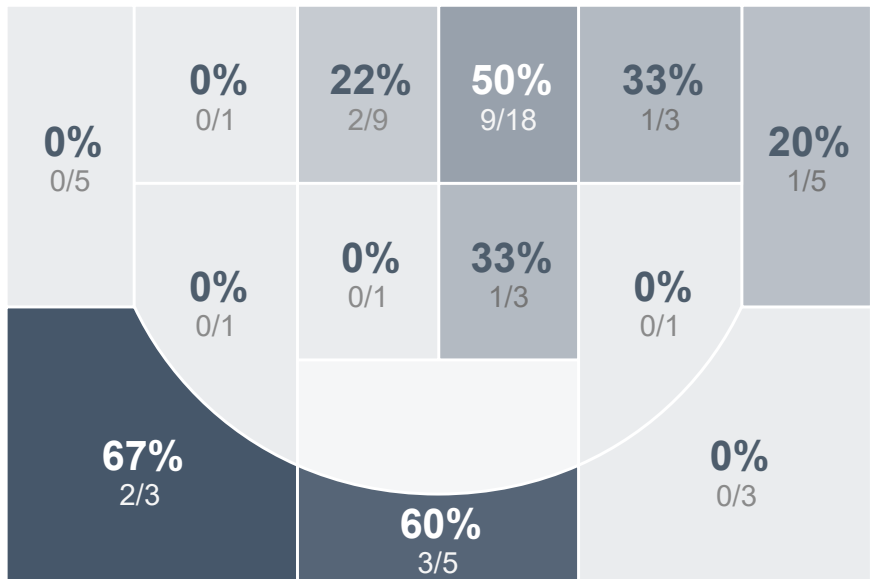
Team Stats

	WCHS	BCHS
Field Goal %	28.6%	32.8%
Effective Field Goal %	33.7%	37.9%
2FG Made/Attempted	9/29	13/37
2FG%	31.0%	35.1%
3FG Made/Attempted	5/20	6/21
3FG%	25.0%	28.6%
FT Made/Attempted	6/7	9/15
Free Throw Percentage	85.7%	60.0%
Points Per Possession	0.60	0.80
Transition Points	4	7
Points Off Turnovers	3	2
Second Chance Points	0	6
Points in the Paint	14	24
Offensive Rebounds	3	15
Defensive Rebounds	27	31
Assists	8	12
Deflections	14	18
Steals	9	9
Blocks	3	0
Turnovers	16	16
Personal Fouls	15	9
Charges Taken	1	3

Watford City Girls Basketball



Bowman County High School



Watford City Girls Basketball's Player Stats

Name	Pts	FG	3FG	FT	+/-	MINS	OREB	DREB	AST	DEFL	STL	BLK	TO	FOUL	CHG
#1 Darbie Moberg	0	0/1	0/1	0/0	-6	6	0	0	0	0	0	0	0	0	0
#2 Fallon Sampsel	0	0/1	0/0	0/0	+3	4	0	0	0	0	1	0	1	0	0
#3 Hope Cross	0	0/2	0/2	0/0	-13	19	0	2	1	1	1	0	1	0	0
#4 Kenzy Kuchenbuch	0	0/0	0/0	0/0	-3	0	0	0	0	0	0	0	0	0	0
#5 Jessica Mogen	9	3/11	0/3	3/4	-13	29	0	7	3	5	4	1	5	3	1
#10 Bailey Mattson	16	6/13	1/3	3/3	-6	28	0	5	1	2	2	2	2	6	0
#12 Amelia Wisness	0	0/0	0/0	0/0	-8	3	0	0	0	0	0	0	0	2	0
#14 Kally Sorenson	0	0/0	0/0	0/0	-3	2	0	0	0	1	0	0	1	1	0
#20 Damitria Brantley	0	0/1	0/0	0/0	-1	0	0	0	0	0	0	0	0	0	0
#21 Adi Schaff	6	2/10	2/5	0/0	-9	30	1	2	1	4	1	0	3	2	0
#22 Jordyn Pedersen	5	2/8	1/4	0/0	-13	31	0	2	2	1	0	0	1	1	0
#24 Annabelle Bohn	3	1/2	1/2	0/0	+2	6	0	1	0	0	0	0	2	0	0

Bowman County High School's Player Stats

Name	Pts	FG	3FG	FT	+/-	MINS	OREB	DREB	AST	DEFL	STL	BLK	TO	FOUL	CHG
#0 Adyson Gerbig	2	1/6	0/2	0/0	+10	27	2	5	3	2	1	0	3	1	0
#1 Landyn Gerbig	4	2/3	0/1	0/0	-2	19	3	0	1	3	0	0	1	1	1
#10 Sophia Headley	20	7/14	2/3	4/4	+14	28	4	10	2	4	5	0	6	2	0
#12 Jaci Fischer	7	1/10	1/6	4/4	+12	29	3	3	1	1	0	0	2	2	1
#14 Kennedy Senn	0	0/2	0/0	0/0	0	4	0	0	0	0	0	0	0	1	0
#15 Julie Sarsland	4	1/5	1/2	1/4	+20	24	1	2	1	2	0	0	2	2	0
#21 Raegen Honeyman	16	7/18	2/7	0/3	+16	29	1	7	4	6	3	0	2	0	1