

Box Score Report

DHS @ Dawson County - Dec 2, 2023 - W 56-50

Period Stats

Team	1	2	3	4	Final
DHS	10	9	18	19	56
DCHS	16	9	13	12	50

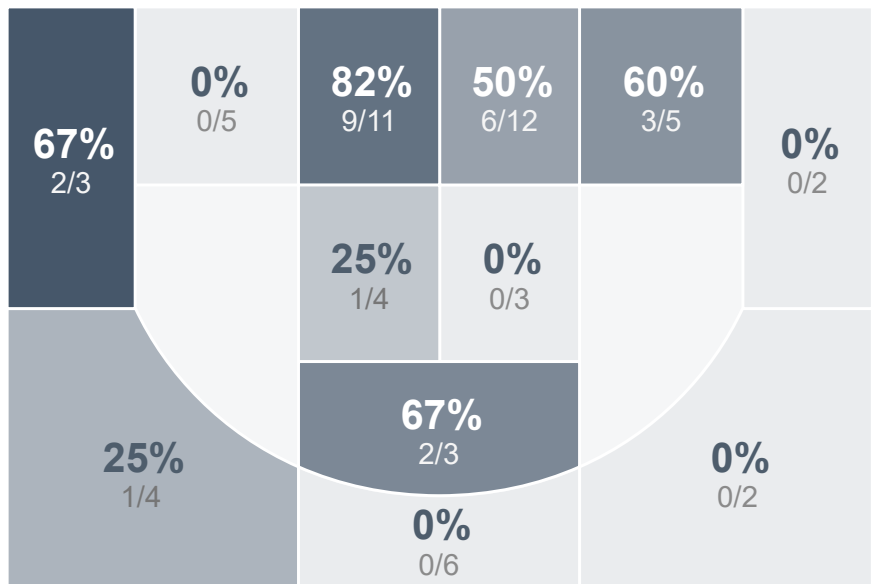
Run Graph



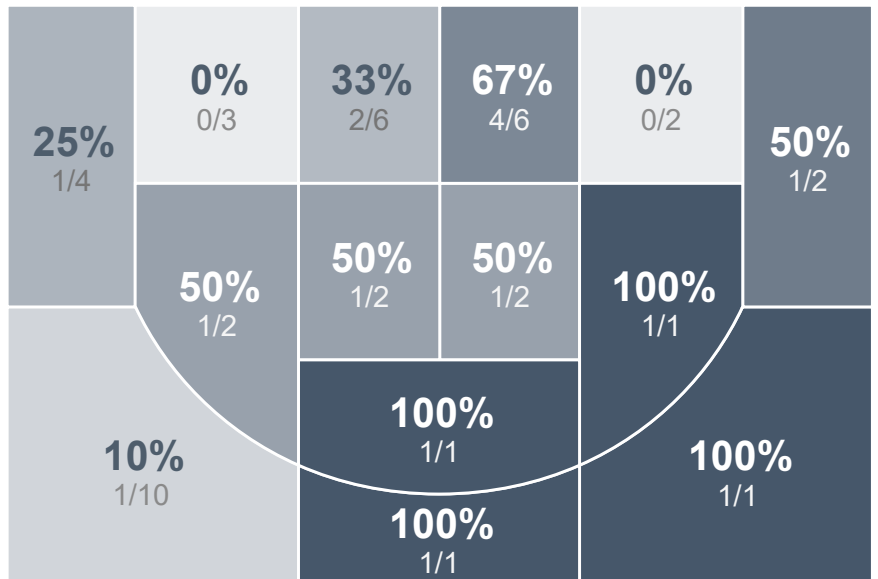
Team Stats

	DHS	DCHS
Field Goal %	40.0%	37.2%
Effective Field Goal %	42.5%	43.0%
2FG Made/Attempted	21/43	11/25
2FG%	48.8%	44.0%
3FG Made/Attempted	3/17	5/18
3FG%	17.6%	27.8%
FT Made/Attempted	5/10	13/22
Free Throw Percentage	50.0%	59.1%
Points Per Possession	0.86	0.72
Transition Points	10	4
Points Off Turnovers	20	10
Second Chance Points	12	7
Points in the Paint	32	16
Offensive Rebounds	12	6
Defensive Rebounds	23	24
Assists	14	9
Deflections	12	21
Steals	11	10
Blocks	0	0
Turnovers	12	22
Personal Fouls	21	11
Charges Taken	1	0

Dickinson Girls Varsity Basketball



Dawson County High School



Dickinson Girls Varsity Basketball's Player Stats

Name	Pts	FG	3FG	FT	+/-	MINS	OREB	DREB	AST	DEFL	STL	BLK	TO	FOUL	CHG
#1 Jenna Nelson	10	4/9	1/2	1/4	- 4	22	0	2	1	2	2	0	2	3	1
#2 Maycee Moe	0	0/0	0/0	0/0	+ 6	4	0	0	2	0	0	0	0	0	0
#12 Abbey Dutke	14	6/16	2/9	0/0	+ 2	27	1	3	2	2	2	0	1	3	0
#13 Jazmin Barry	10	5/11	0/0	0/0	+ 3	27	3	6	1	4	2	0	0	2	0
#15 Braelynn Farnsworth	4	1/3	0/1	2/4	+ 3	22	1	0	4	2	1	0	1	2	0
#20 Lauren Selle	8	4/11	0/2	0/0	+ 6	27	1	6	3	0	3	0	3	5	0
#22 Abby Praus	0	0/3	0/3	0/0	+ 2	14	1	1	0	1	0	0	1	1	0
#23 Sadie Stevenson	10	4/7	0/0	2/2	+ 12	22	4	4	1	1	1	0	4	5	0

Dawson County High School's Player Stats

Name	Pts	FG	3FG	FT	+/-	MINS	OREB	DREB	AST	DEFL	STL	BLK	TO	FOUL	CHG
#10 Emma Buckley	7	2/4	1/2	2/3	+ 8	21	1	1	1	1	0	0	3	1	0
#11 Jaylene Silha	0	0/3	0/2	0/0	- 11	30	0	4	2	3	2	0	5	0	0
#12 Codi Nagle	23	9/20	3/7	2/4	- 6	30	1	5	1	5	3	0	3	3	0
#13 Maggie Schock	3	1/2	0/1	1/2	- 3	18	0	2	1	0	0	0	5	2	0
#20 Sari Murphy	10	2/11	1/6	5/8	- 11	27	0	4	1	4	2	0	2	1	0
#24 Jane Harrison	7	2/3	0/0	3/5	- 6	33	1	3	2	6	3	0	4	4	0
#30 Molly Basta	0	0/0	0/0	0/0	- 1	5	1	0	1	2	0	0	0	0	0